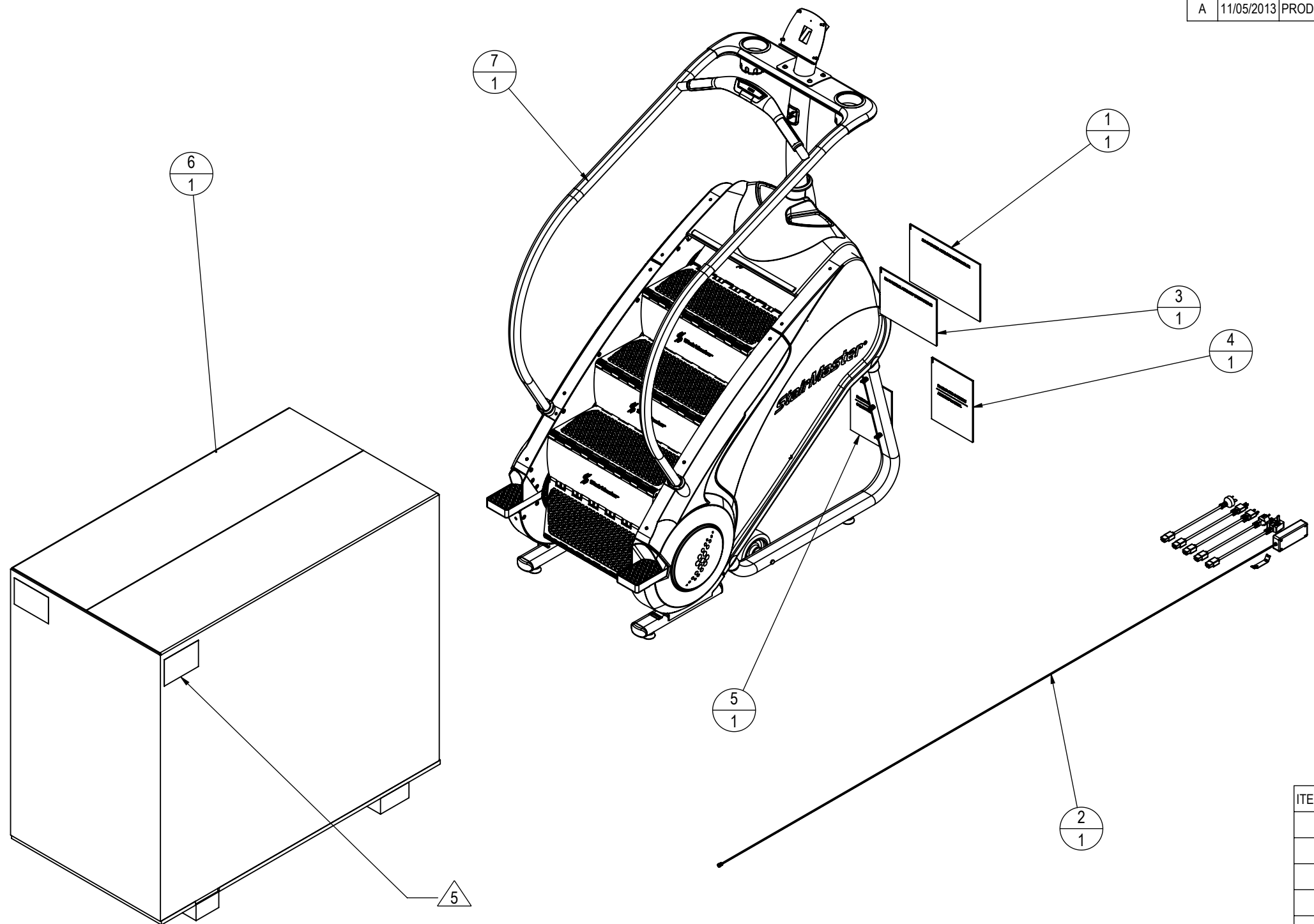


REVISION HISTORY				
REV	DATE	DESCRIPTION	ECO	BY
A	11/05/2013	PRODUCTION RELEASE	14321	ATV



- NOTES:
- BOX SIZE
    - A. L = 58.7in (1491mm)
    - B. W = 31.9in (810mm)
    - C. H = 52in (1321mm)
  - BOX UNIT GROSS WEIGHT: 438lb (199kg)
  - GAUNTLET NET WEIGHT: 343lb (156kg)
  - GENERIC LABEL INFORMATION (4 PLACES)
    - A. MODEL: GAUNTLET
    - B. SKU: 150015
    - C. SERIAL NUMBER: SKU-DAY-YYWWXXX
    - D. DESIGNED IN THE USA
    - E. MADE IN CHINA
  - CLEAN AREA WITH DENATURED ALCOHOL BEFORE APPLYING

ITEM NO.	PART NUMBER	DESCRIPTION	QTY.
1	050-0106	SM GAUNTLET ASSEMBLY HARDWARE #2	1
2	050-0250	ASSY, ACCESSORY KIT, SM5	1
3	050-0263	SM GAUNTLET ASSEMBLY HARDWARE #1	1
4	050-0326	MANUAL, ASSEMBLY, SM GAUNTLET	1
5	050-0327	MANUAL, OWNERS, SM GAUNTLET	1
6	050-0329	PACKAGING, CRATE, SM5 GAUNTLET	1
7	150015-001	ASSY, STAIRMASTER SM5 GAUNTLET	1

**DOCUMENT STATUS:**

NOTICE OF PROPRIETARY INFORMATION  
 THIS DOCUMENT SHALL NOT BE REPRODUCED NOR SHALL THE INFORMATION CONTAINED HEREIN BE USED BY OR DISCLOSED TO OTHER EXCEPT AS EXPRESSLY AUTHORIZED BY CORE HEALTH & FITNESS, LLC.

CLASS OF WORK	UNLESS OTHERWISE SPECIFIED DIMS ARE IN mm. TOLERANCES FOR MEASURE OF LENGTH ARE:							ANGLES = ±2°		
	0.5 to 3	>3 to 6	>6 to 30	>30 to 120	>120 to 400	>400 to 1000	>1000 to 2000	>2000		
FINE	±0.05	±0.05	±0.1	±0.15	±0.2	±0.3	±0.5	----		
MEDIUM	±0.1	±0.1	±0.2	±0.3	±0.5	±0.8	±1.2	±2		
COARSE	±0.2	±0.3	±0.5	±0.8	±1.2	±2	±3	±4		
VERY COARSE	----	±0.5	±1	±1.5	±2.5	±4	±6	±8		

MATERIAL SEE BOM

FINISH SEE BOM

VENDOR: \_\_\_\_\_ P/N: \_\_\_\_\_

THIRD ANGLE PROJECTION		
DRAWN	INITIAL	DATE
CHECKED		
APPROVED		
	U.O.M.	MM

**CORE HEALTH & FITNESS, LLC**  
 4400 NE 77th Ave., Suite 300  
 Vancouver, WA 98662

CORE PART NO: **150015** REV: **A**

TITLE: **ASSY, FINAL SKU, GAUNTLET**

SCALE: 1:18 SHEET 1 OF 1 SHEET SIZE: B

REVISION HISTORY				
REV	DATE	DESCRIPTION	ECO	BY
A	08/20/2013	PRODUCTION RELEASE	14321	ATV

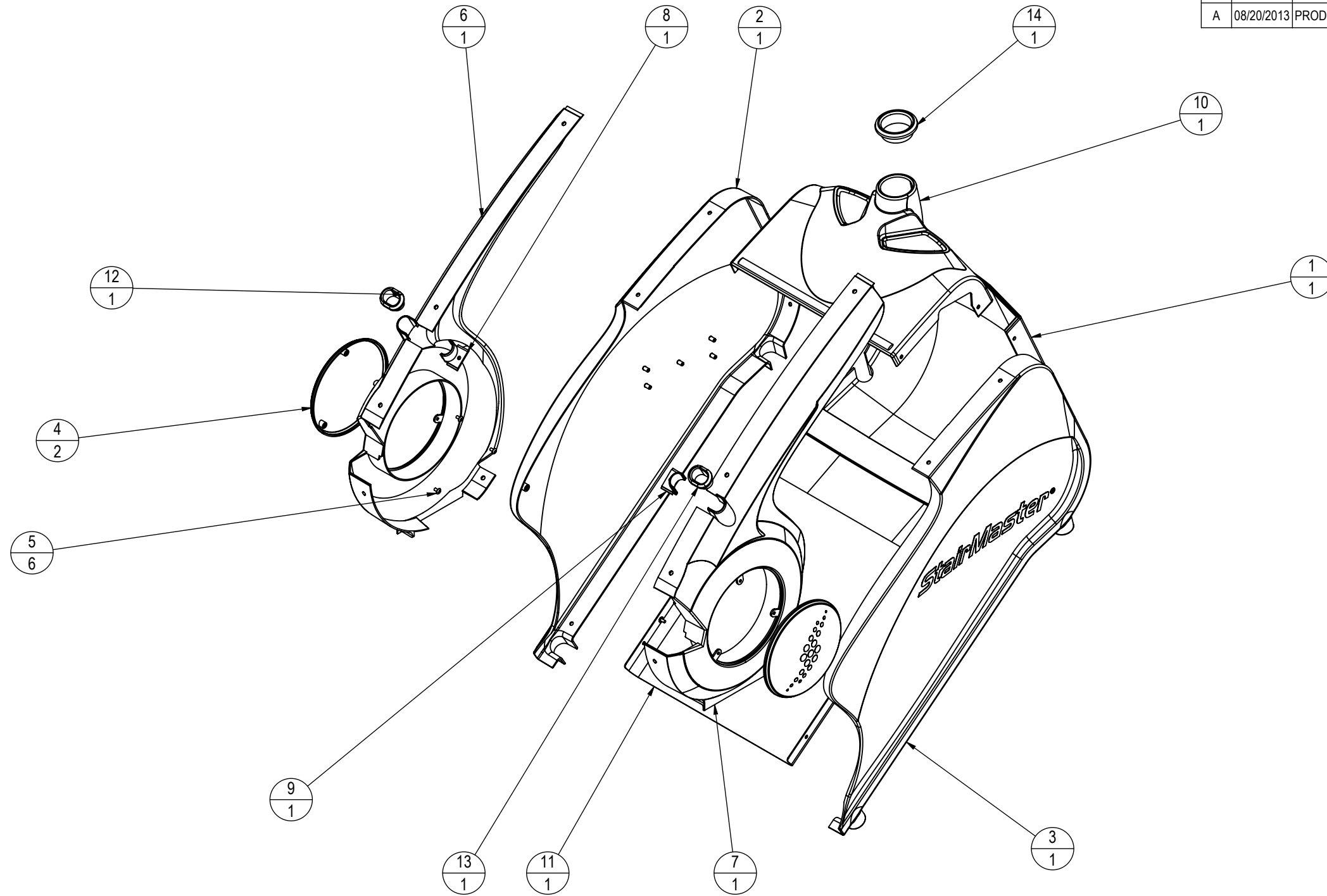


TABLE 1

BASE P/N	COLOR DISCRPTION
050-0063	-XXX
	BLK = MULTI COLOR BLACK/DK GREY
	SIL = MULTI COLOR LT/DK GREY

ITEM NO.	PART NUMBER	DESCRIPTION	QTY.
1	050-0295-35	FRONT SHIELD, STAIRMASTER, MOLD-IN COLOR	1
2	050-0296-35	BODY PANEL, L, MOLD-IN COLOR	1
3	050-0297-35	BODY PANEL, R, MOLD-IN COLOR	1
4	050-0300-35	WHEEL, MOLD-IN COLOR	2
5	110-3472	SCREW, 1/4-20, 1/2", TPHS, CS, ECB	6
6	711-3294-37	SHROUD, LOWER, LT, STARMILL	1
7	711-3295-37	SHROUD, LOWER, RT, STARMILL	1
8	711-3303-37	COVER, HAND RAIL, LT, SM	1
9	711-3304-37	COVER, HAND RAIL, RT, SM	1
10	711-3308-35	SHROUD, COVER, UPPER, STARMILL	1
11	711-3320-35	SHROUD, PAN, BELLY, STARMILL	1
12	711-3340	GROMMET, HANDRAIL, LT, STARMILL	1
13	711-3341	GROMMET, HANDRAIL, RT, STARMILL	1
14	711-3342	GROMMET, NECK, STARMILL	1

NOTES:  
 1. RoHS COMPLIANT  
 2. REFER TO TABLE 1 FOR COLOR COMBINATION

**DOCUMENT STATUS:  
 DEVELOPMENT**

NOTICE OF PROPRIETARY INFORMATION  
 THIS DOCUMENT SHALL NOT BE REPRODUCED NOR SHALL THE INFORMATION CONTAINED HEREIN BE USED BY OR DISCLOSED TO OTHER EXCEPT AS EXPRESSLY AUTHORIZED BY CORE HEALTH & FITNESS, LLC.

CLASS OF WORK	UNLESS OTHERWISE SPECIFIED DIMS ARE IN mm. TOLERANCES FOR MEASURE OF LENGTH ARE:								MATERIAL SEE BOM
	0.5 to 3	>3 to 6	>6 to 30	>30 to 120	>120 to 400	>400 to 1000	>1000 to 2000	>2000	
FINE	±0.05	±0.05	±0.1	±0.15	±0.2	±0.3	±0.5	----	FINISH SEE BOM
MEDIUM	±0.1	±0.1	±0.2	±0.3	±0.5	±0.8	±1.2	±2	
COARSE	±0.2	±0.3	±0.5	±0.8	±1.2	±2	±3	±4	
VERY COARSE	----	±0.5	±1	±1.5	±2.5	±4	±6	±8	

THIRD ANGLE PROJECTION		DRAWN		INITIAL	DATE	CORE PART NO		REV
		ATV		ATV	08/20/2013	<b>050-0063-XXX</b>		<b>A</b>
CHECKED		APPROVED		U.O.M.		MM	TITLE	
							SHROUD ASSY	
VENDOR:		P/N:		SCALE: 1:12		SHEET 1 OF 1		SHEET SIZE: B

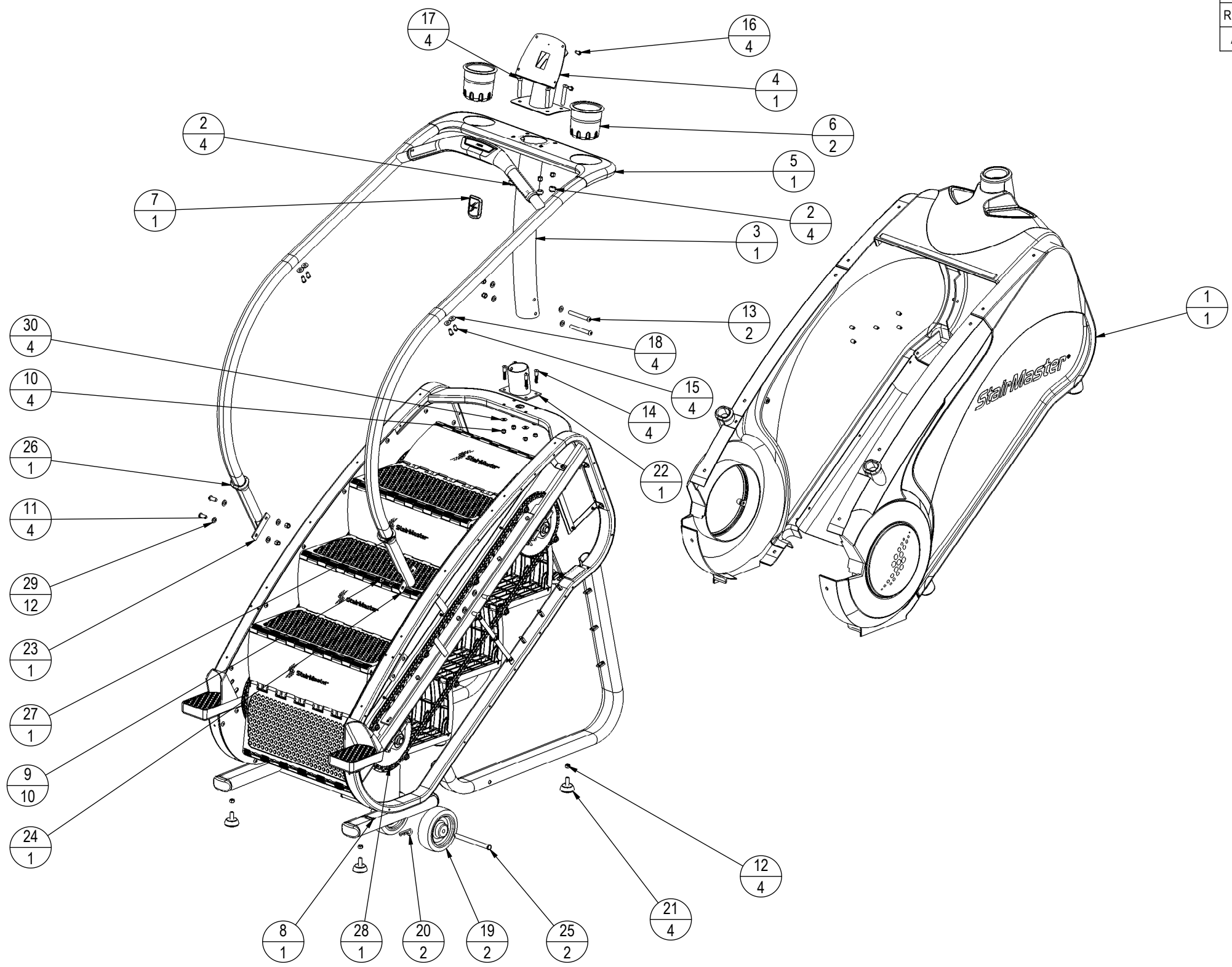
**CORE HEALTH & FITNESS, LLC**  
 4400 NE 77th Ave., Suite 300  
 Vancouver, WA 98662

CORE PART NO: **050-0063-XXX** REV: **A**

TITLE: **SHROUD ASSY**

SCALE: 1:12 SHEET 1 OF 1 SHEET SIZE: B

REVISION HISTORY				
REV	DATE	DESCRIPTION	ECO	BY
A	12/12/2013	PRODUCTION RELEASE	14321	ATV



ITEM NO.	PART NUMBER	DESCRIPTION	QTY.
1	050-0063-XXX	SHROUD ASSY	1
2	050-0072	NUT CAP	4
3	050-0303-26	LOWER MAST WELDMENT	1
4	050-0304-26	CONSOLE SUPPORT, UPPER WELDMENT	1
5	050-0305	HANDRAIL, DIPPING ASSY	1
6	050-0320	WATER BOTTLE HOLDER, GAUNTLET	2
7	050-0322	SM BADGE	1
8	050-2199	LABEL, SECONDARY S/N, CARDIO	1
9	110-1830	NUT, 3/8-16, NYLOK HEX	10
10	110-1871	NUT, NYLON INSERT	4
11	110-3479	SCREW, 3/8-16, 1", BHCS, CS, ECB	4
12	110-3480	NUT, 3/8-16, SHN, CS, ZP, GR 5	4
13	110-3481	SCREW, 3/8-16, 3 5/8", BHCS, AS, ZP	2
14	110-3482	SCREW, 5/16-18, 1 3/4", BHCS, AS, ZP	4
15	110-3510	SCREW, 5/16-18, 3/4", BHCS, AS, ECB	4
16	110-3543	SCREW, 1/4-20 X .75, PAN HEAD, W/ WASHER	4
17	110-3587	SCREW, 3/8-16, 2", BHCS, SS	4
18	120-3330	WASHER, PLAIN, ID: .375", OD: .875", TH: .06", CS, ECB	4
19	130-1788	WHEEL, OD: 6", BORE: 5", PP, NF	2
20	140-3494	PIN, COTTER, Ø.12" WIRE, 1/2"-5/8" SHAFT, CS, ZP	2
21	140-3495	FEET, 3/8-16 SCREW, 1.93" BASE	4
22	711-3298	ADAPTER, FRAME, NECK, STARMILL	1
23	711-3305-26	WELDMENT, RAIL, LOWER, LT, STARMILL	1
24	711-3310-26	WELDMENT, RAIL, LOWER, RT, STARMILL	1
25	711-3339	PIN, TRANSPORTATION, SM	2
26	711-3340	GROMMET, HANDRAIL, LT, STARMILL	1
27	711-3341	GROMMET, HANDRAIL, RT, STARMILL	1
28	711-3433	ASSY, BASE, SM5 GAUNTLET	1
29	731-0367	WASHER, PLAIN, M10	12
30	740-7842	WASHER, 8.4mmID X 21mm OD X 1.6mm THK	4

**DOCUMENT STATUS:**

NOTICE OF PROPRIETARY INFORMATION  
THIS DOCUMENT SHALL NOT BE REPRODUCED NOR SHALL THE INFORMATION CONTAINED HEREIN BE USED BY OR DISCLOSED TO OTHER EXCEPT AS EXPRESSLY AUTHORIZED BY CORE HEALTH & FITNESS, LLC.

CLASS OF WORK	UNLESS OTHERWISE SPECIFIED DIMS ARE IN mm. TOLERANCES FOR MEASURE OF LENGTH ARE:							ANGLES = ±2°
	0.5 to 3	>3 to 6	>6 to 30	>30 to 120	>120 to 400	>400 to 1000	>1000 to 2000	
FINE	±0.05	±0.05	±0.1	±0.15	±0.2	±0.3	±0.5	----
MEDIUM	±0.1	±0.1	±0.2	±0.3	±0.5	±0.8	±1.2	±2
COARSE	±0.2	±0.3	±0.5	±0.8	±1.2	±2	±3	±4
VERY COARSE	----	±0.5	±1	±1.5	±2.5	±4	±6	±8

MATERIAL  
SEE BOM

FINISH  
N/A

VENDOR: LAND AMERICA P/N:

THIRD ANGLE PROJECTION		
	INITIAL	DATE
DRAWN	ATV	9/20/2013
CHECKED		
APPROVED		
	U.O.M.	MM

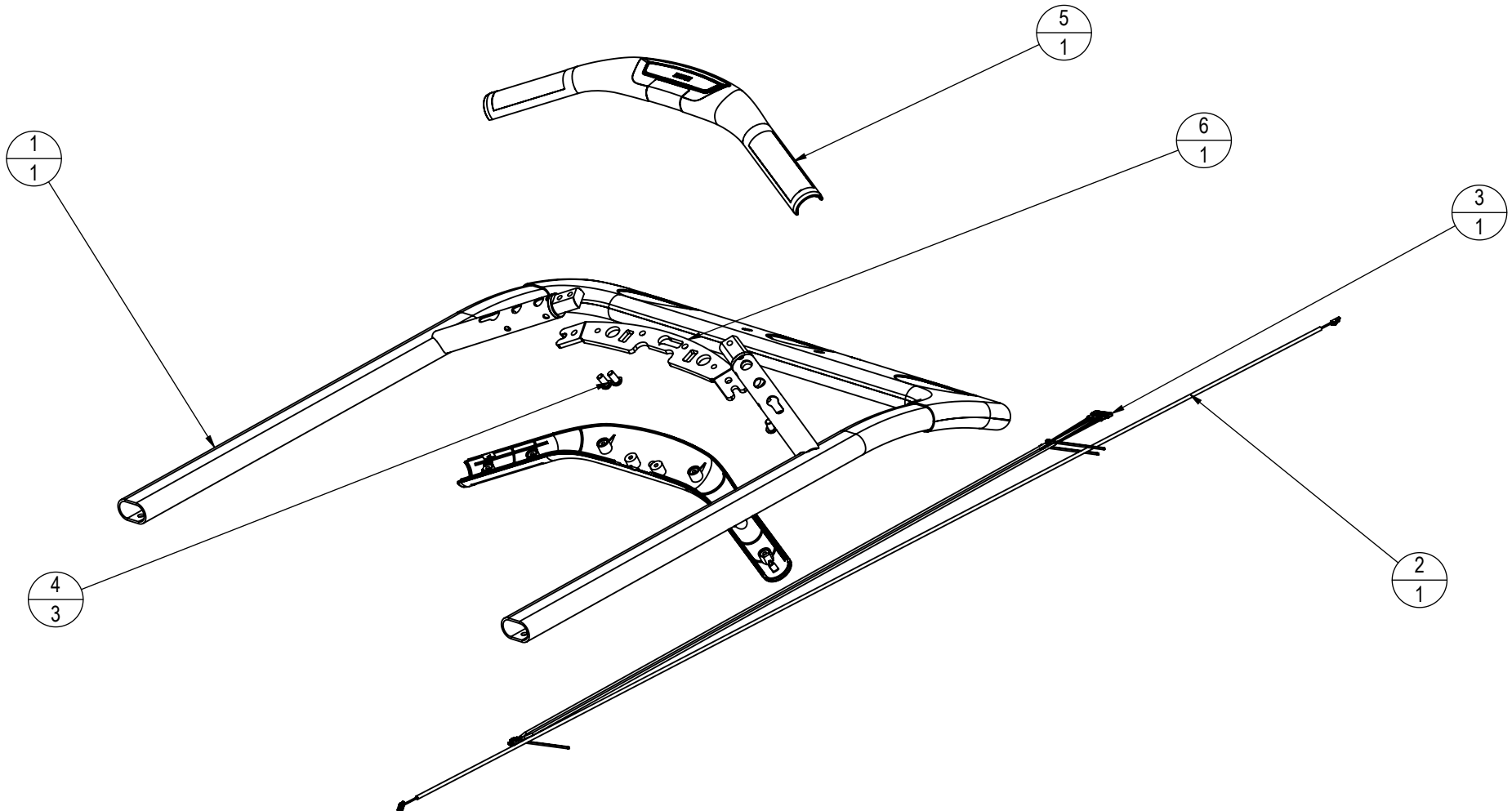
**CORE HEALTH & FITNESS, LLC**  
4400 NE 77th Ave., Suite 300  
Vancouver, WA 98662

CORE PART NO: **150015-001** REV: **A**

TITLE: **ASSY, STAIRMASTER GAUNTLET**

SCALE: 1:75 SHEET 1 OF 1 SHEET SIZE: B

REVISION HISTORY				
REV	DATE	DESCRIPTION	ECO	BY
A	09/25/2013	PRODUCTION RELEASE	14321	ATV



ITEM NO.	PART NUMBER	DESCRIPTION	QTY.
1	050-0306	HANDRAIL, UPPER, DIPPING ASSY	1
2	050-0323	SWITCH EXTENSION CORD	1
3	050-0324	ASSY, CABLE, SPLITTER HR GRIP, E-SM	1
4	110-3418	SCREW, M8x1.25x16,BHC,HK,SS	3
5	711-3345	WARM BAR, MECH. ASSY, E-SM	1
6	740-6098	PLATE, HOT BAR SUPPORT	1

**DOCUMENT STATUS:**

NOTICE OF PROPRIETARY INFORMATION  
THIS DOCUMENT SHALL NOT BE REPRODUCED NOR SHALL THE INFORMATION CONTAINED HEREIN BE USED BY OR DISCLOSED TO OTHER EXCEPT AS EXPRESSLY AUTHORIZED BY CORE HEALTH & FITNESS, LLC.

CLASS OF WORK	UNLESS OTHERWISE SPECIFIED DIMS ARE IN mm. TOLERANCES FOR MEASURE OF LENGTH ARE:								ANGLES = ±2°
	0.5 to 3	>3 to 6	>6 to 30	>30 to 120	>120 to 400	>400 to 1000	>1000 to 2000	>2000	
FINE	±0.05	±0.05	±0.1	±0.15	±0.2	±0.3	±0.5	----	
MEDIUM	±0.1	±0.1	±0.2	±0.3	±0.5	±0.8	±1.2	±2	
COARSE	±0.2	±0.3	±0.5	±0.8	±1.2	±2	±3	±4	
VERY COARSE	----	±0.5	±1	±1.5	±2.5	±4	±6	±8	

MATERIAL  
SEE BOM

FINISH  
SEE BOM

VENDOR: \_\_\_\_\_ P/N: \_\_\_\_\_

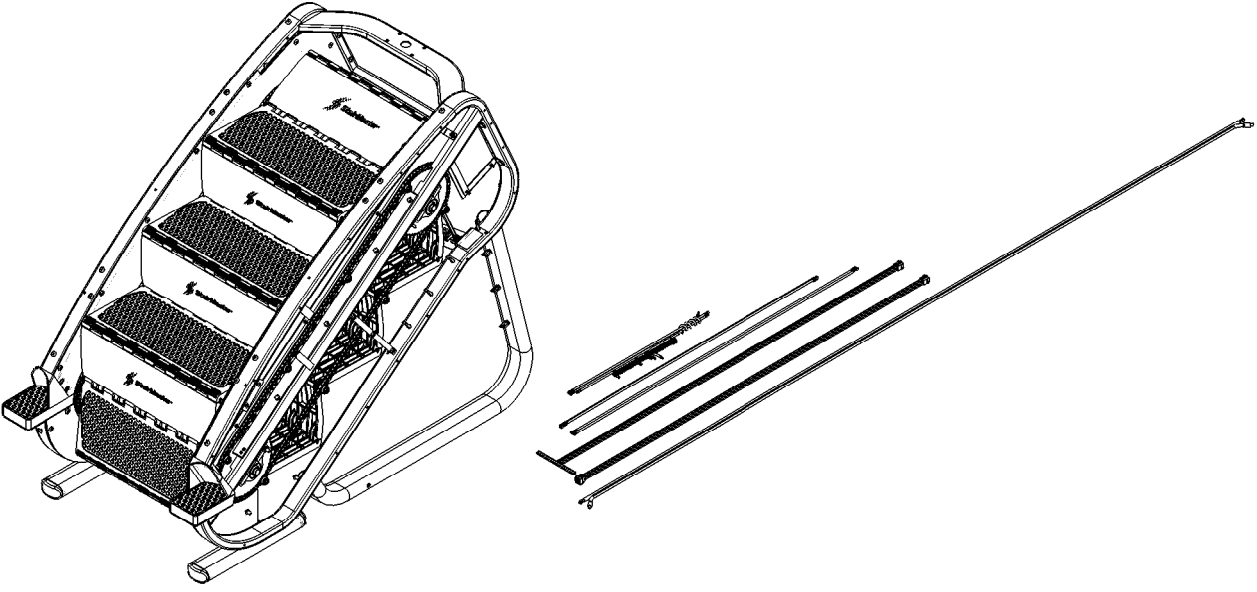
THIRD ANGLE PROJECTION		
	INITIAL	DATE
DRAWN	ATV	09/25/2013
CHECKED		
APPROVED		
U.O.M.	MM	

**CORE HEALTH & FITNESS, LLC**  
4400 NE 77th Ave., Suite 300  
Vancouver, WA 98662

CORE PART NO: **050-0305** REV: **A**

TITLE: \_\_\_\_\_

SCALE: 1:20 SHEET 1 OF 1 SHEET SIZE: B

9		8			7		6			5		4		3		2		1	
J	ITEM NO.	PART NUMBER	*-XX	DESCRIPTION	QTY	ITEM NO.	PART NUMBER	*-XX	DESCRIPTION	QTY	REVISION HISTORY								
	1	003-3507		ASSY, HARNESS, TY/PWR SM9.16			1	55	711-3299			STEP, PLATFORM, STARMILL	8	REV	DATE	DESCRIPTION	ECO	BY	
I	2	050-0032		STEP, RISER 9"	8	56	711-3312		PLATE, ADJUSTER,PILLOW BLOCK, STARMILL	4	A	09/26/2013	PRODUCTION RELEASE	14321	ATV				
	3	050-0038		SWITCH, SM 5 POWER	1	57	711-3313		WELDMENT, SPROCKET, UPPER, STARMILL	1									
H	4	050-0039		ASSY, MAIN POWER	1	58	711-3314		WELDMENT, SPROCKET, LOWER, STARMILL	1									
	5	050-0105		SWITCH, POWER CONNECTOR CABLE	1	59	711-3315		ENDCAP, LOWER, STARMILL	4									
G	6	050-0154		WIRING HARNESS PCB TO CONSOLE, LOWER	1	60	711-3316		PLATE, BEARING, WEIGHT, STARMILL	2									
	7	050-0161		WIRING HARNESS PCB TO CONSOLE, UPPER	1	61	711-3317		BRACKET, TENSION, ALT, STARMILL	1									
F	8	050-0201		ASSY, SM5 MAIN POWER CLIP TO CONSOLE	1	62	711-3321		SHROUD, INNER, LWR, LT, STARMILL	1									
	9	050-0252		TERMINAL, QUICK-DISCONNECT, SPLITTER	2	63	711-3322		SHROUD, INNER, LWR, RT, STARMILL	1									
E	10	050-0254		SCREW, PHS, M4 X 0.7 X 10	4	64	711-3326		SHAFT, PIVOT, PEDAL, STARMILL	8									
	11	050-0255		CABLE ASSY	1	65	711-3327		SHAFT, PIVOT, SUPPORT, PEDAL, STARMILL	8									
D	12	110-0570		SCREW, 1/4-20x3/4,HHCS,HE,CS,ZP	4	66	711-3328		BRACKET, SUPPORT, TRANS, STARMILL	1									
	13	110-0575		BOLT, 1/4-20 x 1.25, HHCS,HE,CS,ZP	4	67	711-3329		ISOLATOR, GEARBOX, RUBBER, STARMILL	1									
C	14	110-0580		SCREW, 1/4-20x 1/2" HHCS	2	68	711-3332		SPACER, PLASTIC, Ø.515" X Ø1.0" X 1.7"	1									
	15	110-1830		NUT, 3/8-16, NYLOK HEX	8	69	711-3333		CATCH, LUBE, GEARBOX, BISON	1									
B	16	110-1833		NUT, 1/2-13, NYLOK HEX	2	70	711-3334		GEARBOX, 19:1, BISON	1									
	17	110-1871		NUT, NYLON INSERT	6	71	711-3335		BRACKET, GEARBOX, PIVOT, ALT, STARMILL	1									
A	18	110-3098		NUT, 1/4-20, HEX, NYLOC	4	72	711-3336		ARM, TENSION, CHAIN, E-SM	1									
	19	110-3140		SCREW, 5/16-18, 3/4", HHCS, CS, ZP, GR 5	9	73	711-3361		ASSY,W/ COUNTER, ALTERNATOR, 1.5" PULLEY	1									
		20		SCREW, 1/2-13, 2", HHCS, CS, ZP, GR 8	1	74	711-3364		ASSY, BRACE, UPPER, KICK PANEL, LT, SM	1									
		21		SCREW, 1/4-20, 5/8", SHCS, AS, ECB	2	75	711-3365		ASSY, BRACE, LOWER, KICK PANEL, LT, SM	1									
		22		SCREW, 1/4-20, 1/2", TPHS, CS, ECB	14	76	711-3366		ASSY, BRACE, UPPER, KICK PANEL, RT, SM	1									
		23		STUD, 3/8-16, 2.25", PRTL THRD, CS, ZP, GR 5	8	77	711-3367		ASSY, BRACE, LOWER, KICK PANEL, RT, SM	1									
		24		NUT, 5/16-24, LOCK, ZP	16	78	711-3393		LIMITER, PILLOW BLOCK, SM	2									
		25		SCREW, SET, 5/16-24, 3/8", SHSS, AS, ECB	2	79	711-3427		SHROUD, INNER, LT, LONG, SM	1									
		26		SCREW, SET, 3/8-16, 1", SHSS, AS, ECB	2	80	711-3428		SHROUD, INNER, RT, LONG, SM	1									
		27		SCREW, 1/2-13, 4", HHCS, CS, ZP, GR 5	1	81	711-3430-XX	-31	ASSY, MAIN FRAME WELDMENT, SM5 V3	1									
		28		SCREW, 1/4-20, 1", HHCS, CS, ZP, GR 5	2	82	731-0294		WASHER,M8,NYLON	32									
		29		WASHER, 1/4, SAE FLAT	12	83	731-0373		WASHER,PLAIN,M6	12									
		30		WASHER, 1/4, SPLIT LOCK	4	84	740-7304		NUT, RIVET, M6	10									
		31		WASHER, 3/8 X 1 OD	8	85	740-7842		WASHER, 8.4mmID X 21mm OD X 1.6mm THK	1									
		32		WASHER, 5/16 SAE FLAT, 11/16" OD X 11/32" ID, .06 THICK	16	86	740-7898		SCREW, M6 X 1.0, 20MM, SHC, HK	12									
		33		WASHER, 1/2 X 1.0625 OD X .093	2														
		34		WASHER, SHOULDER, ID: .257", OD: .343", TH: .139", PA 6	2														
		35		BEARING, 8 MM ID X 22 MM OD X 7 MM WIDTH	16														
		36		PILLOWBLOCK, 3/4", BEARING	4														
		37		BELT, 200J6, POLY-V	1														
		38		PULLEY, ID: .5", OD: 3", J6, Q235A, ZP	1														
		39		SPROCKET, IDLER, Ø.5"ID, 15T, #40	1														
		40		CHAIN, INPUT DRIVE, STEPMILL	1														
		41		ASSY, CHAIN, DRIVE, #40, W MSTRLINK, E-SM	2														
		42		ASSY, SPROCKET, Ø5/8"ID, 12T, #40	1														
		43		TIE STRAP, 3.5"	3														
		44		E-CLIP, EXT, TRUEARC 5133-25 - S0.25	16														
		45		SADDLE, WIRE, BARBED, PUSH	7														
		46		GROMMET, OD: .44", ID: .25", TH: .25", PU	2														
		47		SPRING, EXT, OD: 15.85mm, SD: 1.75mm, RNG: 25.5-45.5mm	1														
		48		VIDEO CONNECTOR	1														
		49		ASSY, RELAY, RESISTOR, SM916	1														
		50		RIVET, FLUSH, LOCK, PUSH, Ø6.5mm	70														
		51		FOOTPAD, REAR, LT, STARMILL	1														
		52		FOOTPAD, REAR, RT, STARMILL	1														
		53		STOP, FOOT, RUBBER LT, STARMILL	1														
		54		STOP, FOOT, RUBBER RT, STARMILL	1														

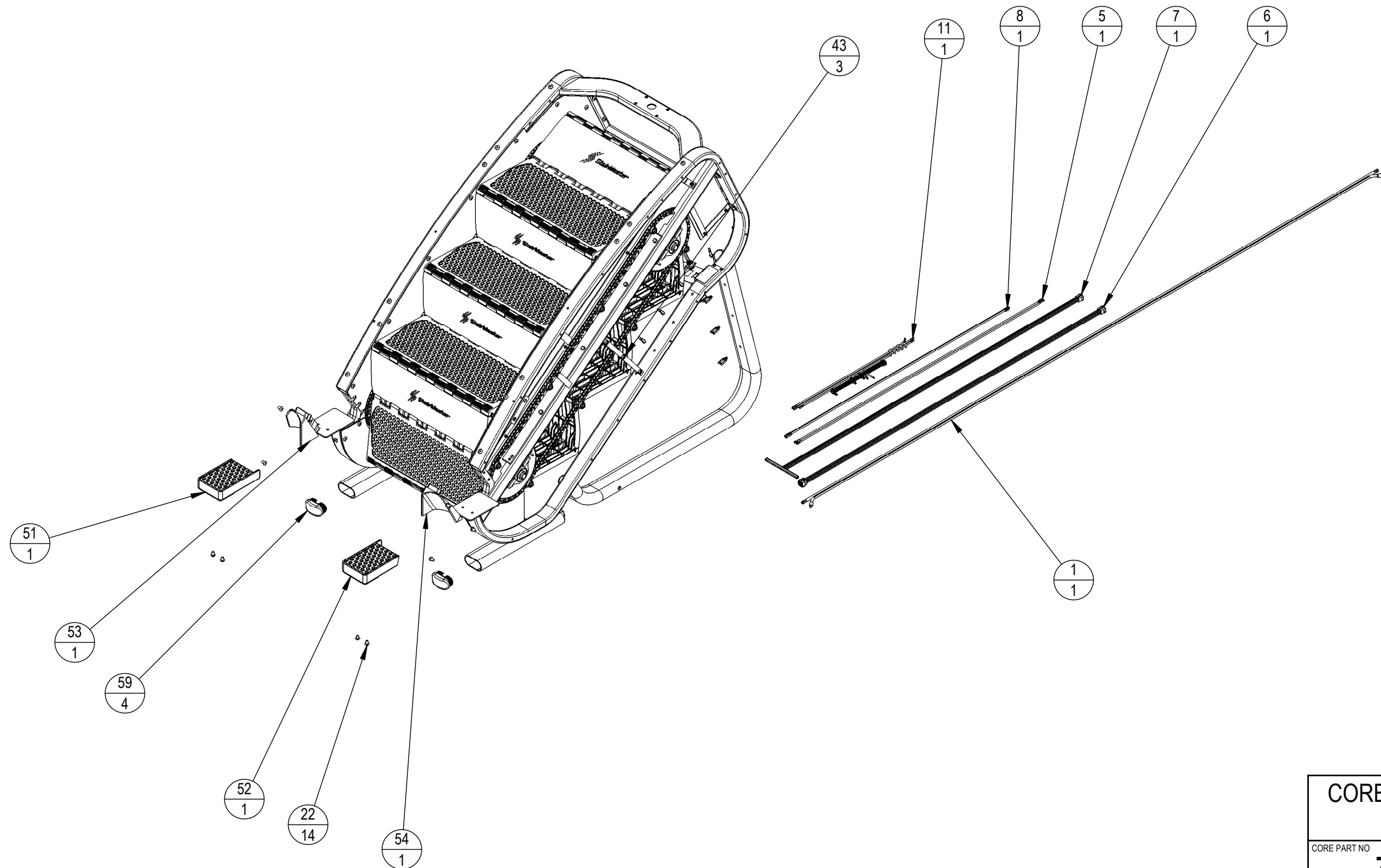
NOTES:  
1. COLOR DESIGNATOR PER -XX AS SPECIFIED IN SOP 620-8222

**DOCUMENT STATUS:**

NOTICE OF PROPRIETARY INFORMATION  
THIS DOCUMENT SHALL NOT BE REPRODUCED NOR SHALL THE INFORMATION CONTAINED HEREIN BE USED BY OR DISCLOSED TO OTHER EXCEPT AS EXPRESSLY AUTHORIZED BY CORE HEALTH & FITNESS, LLC.

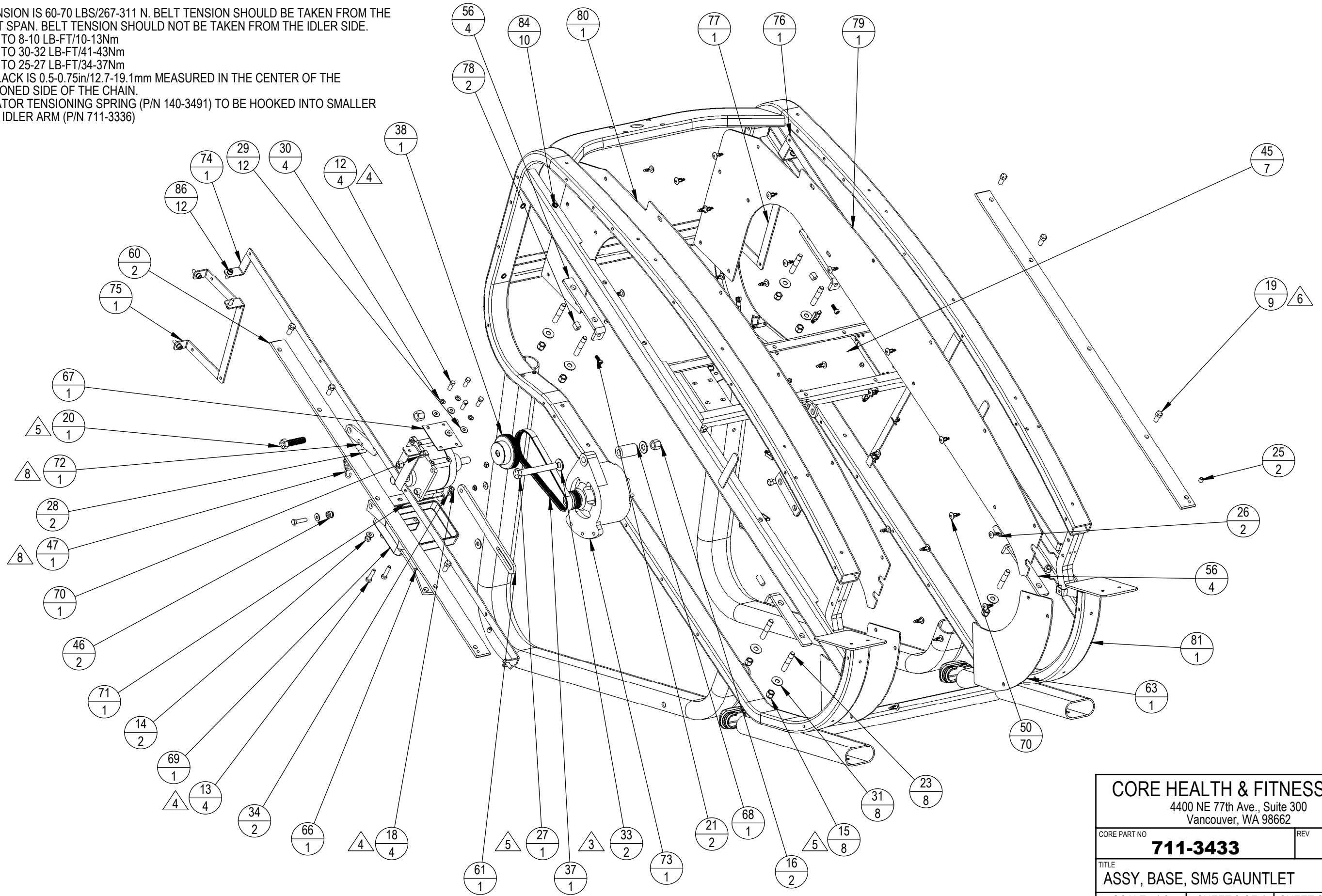
MATERIAL SEE BOM	THIRD ANGLE PROJECTION			CORE HEALTH & FITNESS, LLC 4400 NE 77th Ave., Suite 300 Vancouver, WA 98662		
	DRAWN	INITIAL	DATE	CORE PART NO	REV	
		ATV	09/26/2013	<b>711-3433</b>	<b>A</b>	
		CHECKED		TITLE	ASSY, BASE, SM5 GAUNTLET	
APPROVED			SCALE: 1:22	SHEET 1 OF 4	SHEET SIZE: B	
VENDOR:	P/N: LAND AMERICA			U.O.M.	MM	

NOTES: CONT.  
 2. CLEAN PART WITH DENATURED ALCOHOL 90-100% PRIOR TO ADHERING LOGO OR FOAM



<b>CORE HEALTH &amp; FITNESS, LLC</b> 4400 NE 77th Ave., Suite 300 Vancouver, WA 98662		
CORE PART NO	<b>711-3433</b>	REV <b>A</b>
TITLE <b>ASSY, BASE, SM5 GAUNTLET</b>		
SCALE: 1:15	SHEET 2 OF 4	SHEET SIZE: B

- NOTES: cont.
3. BELT TENSION IS 60-70 LBS/267-311 N. BELT TENSION SHOULD BE TAKEN FROM THE LONGEST SPAN. BELT TENSION SHOULD NOT BE TAKEN FROM THE IDLER SIDE.
  4. TORQUE TO 8-10 LB-FT/10-13Nm
  5. TORQUE TO 30-32 LB-FT/41-43Nm
  6. TORQUE TO 25-27 LB-FT/34-37Nm
  7. CHAIN SLACK IS 0.5-0.75in/12.7-19.1mm MEASURED IN THE CENTER OF THE UNTENSIONED SIDE OF THE CHAIN.
  8. ALTERNATOR TENSIONING SPRING (P/N 140-3491) TO BE HOOKED INTO SMALLER HOLE OF IDLER ARM (P/N 711-3336)



<b>CORE HEALTH &amp; FITNESS, LLC</b> 4400 NE 77th Ave., Suite 300 Vancouver, WA 98662		
CORE PART NO	<b>711-3433</b>	REV <b>A</b>
TITLE <b>ASSY, BASE, SM5 GAUNTLET</b>		
SCALE: 1:8	SHEET 3 OF 4	SHEET SIZE: B

NOTES: cont.

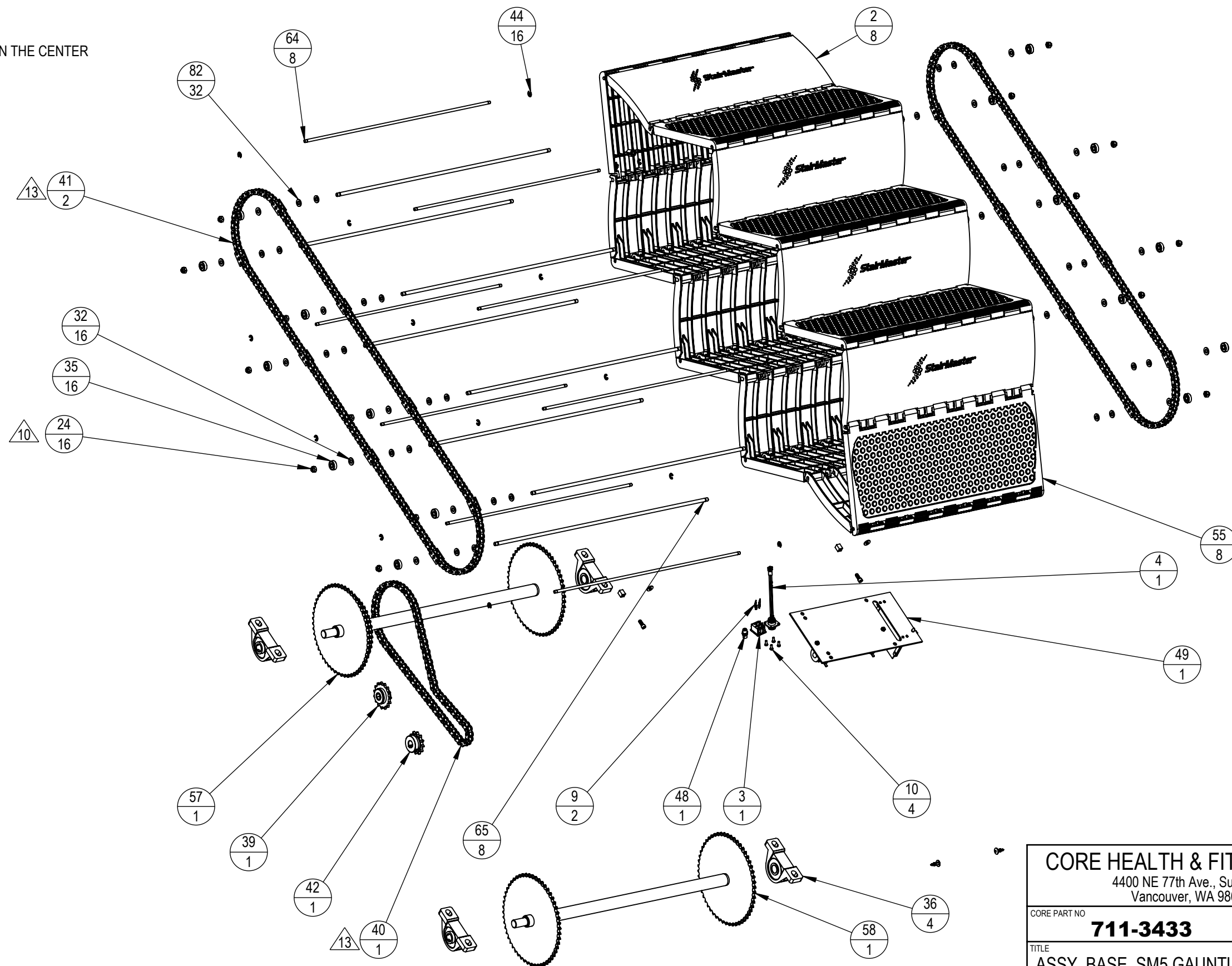
9. BELT TENSION IS 60-70 LBS/267-311 N. BELT TENSION SHOULD BE TAKEN FROM THE LONGEST SPAN. BELT TENSION SHOULD NOT BE TAKEN FROM THE IDLER SIDE.

10. TORQUE TO 8-10 LB-FT/10-13Nm

11. TORQUE TO 30-32 LB-FT/41-43Nm

12. TORQUE TO 25-27 LB-FT/34-37Nm

13. CHAIN SLACK IS 0.5-0.75in/12.7-19.1mm MEASURED IN THE CENTER OF THE UNTENSIONED SIDE OF THE CHAIN.



CORE HEALTH & FITNESS, LLC 4400 NE 77th Ave., Suite 300 Vancouver, WA 98662		
CORE PART NO	<b>711-3433</b>	REV <b>A</b>
TITLE ASSY, BASE, SM5 GAUNTLET		
SCALE: 1:10	SHEET 4 OF 4	SHEET SIZE: B