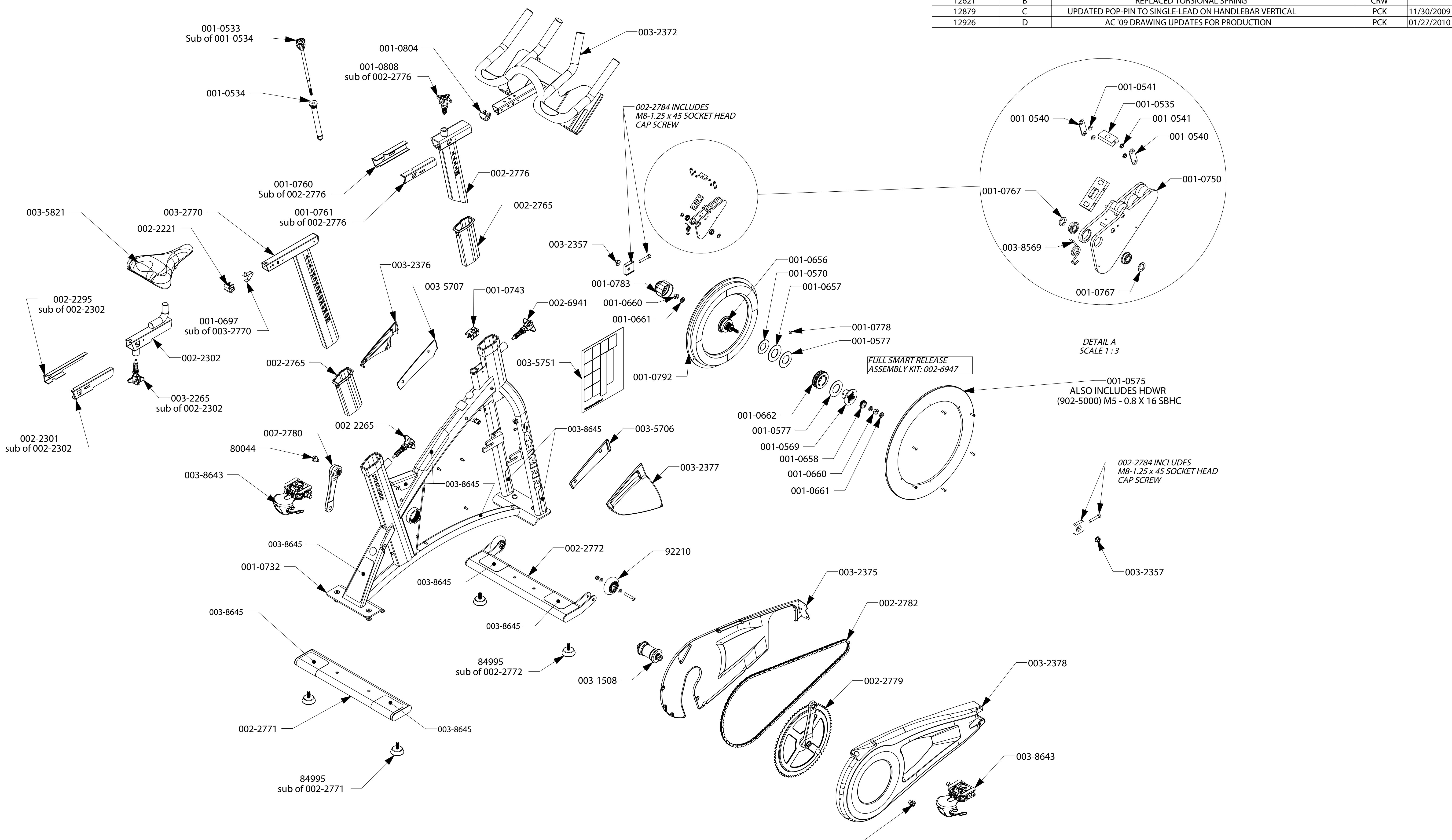


001-0650

ECO NUMBER	REVISION	REVISIONS REV DESCRIPTION	APPROVED	DATE
12489	A	PRODUCTION RELEASE	CRW	
12621	B	REPLACED TORSIONAL SPRING	CRW	
12879	C	UPDATED POP-PIN TO SINGLE-LEAD ON HANDLEBAR VERTICAL	PCK	11/30/2009
12926	D	AC '09 DRAWING UPDATES FOR PRODUCTION	PCK	01/27/2010



NAUTILUS
 NAUTILUS, INC.
 16400 SE NAUTILUS DRIVE, VANCOUVER, WA 98683
 CONTACT

This document is the property of Nautilus, Inc. It may not be reproduced in whole or part, provided to third parties, or used for any purposes other than the performance of work for Nautilus, Inc. without written authorization. All rights are reserved, including copyrights.

DESIGNED	P. KOEGLER	TITLE	SCHWINN AC PERFORMANCE FULL ASSY	
DRAWN	P. KOEGLER	SIZE	D	REV. D
DATE	01/27/2010	PART NO.	001-0650	
ALL APPLICABLE NAUTILUS STANDARDS AND SPECIFICATIONS APPLY.		SCALE:	1:6.5	SHEET 1 OF 1